

PJ

TRUCK BEDS

SERVICE BODIES



pjtruckbeds.com

BACKED BY THE BEST.

903-669-0266

GU

STEEL SERVICE BODY

STANDARD FEATURES

- 11 guage galvaneal deck
- 16 guage galvaneal body (A60)
- Removeable fender panel
- Stainless steel rod & socket door hinges
- Gas cylinder style door holders
- LED rear lighting with wiring harness
- Recessed Rear Bumper
- 1/8" Treadbite aluminum compartment tops
- Automotive stainless steel rotary latches
- Vise socket in bumper
- Conduit in understructure
- Bolted body for secure attachment
- Universal body and bumper mounting kit
- Automotive D Bulb Stripping
- Multi panel doors with internal reinforcements
- Toolbox interior powder coated
- Heavy duty rear tailgate
- Two shelves in the front, one shelf in the rear



*Pictured with optional flip top

POWDER COATED TOUGH!

- 100% primer & top coat
- Super durable powder coat provides coating for years of protection
- Zinc rich primer is used on all surfaces for unsurpassed corrosion protection
- Individually coated components for maximum coverage
- Black Lava non slip coating on deck, bumper, and undercarrige for maximized protection and reduced slip hazard

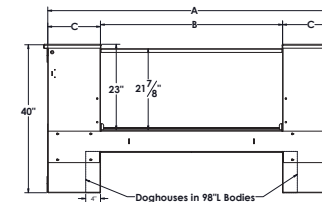
WARRANTY

- 4 Year / 48,000 mile warranty
- Steel bodies come with a **SIX YEAR** No Rust Guarantee!
- Aluminum bodies come with a **TEN YEAR** No Rust Guarantee!

BODIES AVAILABLE IN ANY SIDEPACK COMBINATION

- "W" - Streetside & Curbside : "V" configuration
- "HH" - Streetside & Curbside : "H" configuration
- "VH" - Streetside: "V" configuration; Curbside : "H" configuration
- "HV" - Streetside: "H" configuration; Curbside : "V" configuration

Optional flip tops are available on either or both sides.



Chassis Style	C.A.	A	B	C
98SW	56"	78"	49"	14 1/2"
98DW	56"	94"	49"	22 1/2"
110SW	60"	78"	49"	14 1/2"
110DW	60"	94"	49"	22 1/2"
132DW	84"	94"	49"	22 1/2"

SW - Single Wheel
DW - Dual Wheel

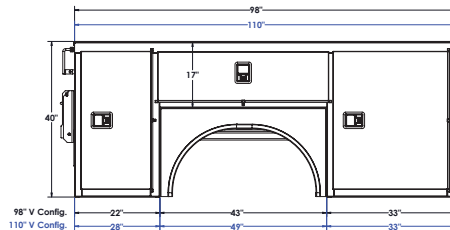
Cargo area wheel well boxes may be necessary to accommodate some chassis.

GUA

ALUMINUM SERVICE BODY

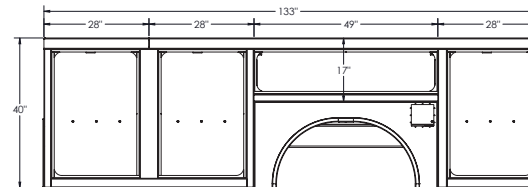


*Pictured with optional flip top



"V" Configuration (V98 & V110)

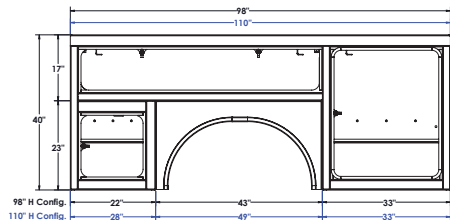
- 1st Vertical: Two adjustable shelves with two adjustable dividers per self
- Horizontal: Open with "Pass-Through" to rear vertical
- Rear Vertical: One adjustable shelf with two adjustable dividers



133" Body - Streetside V-Style Shown

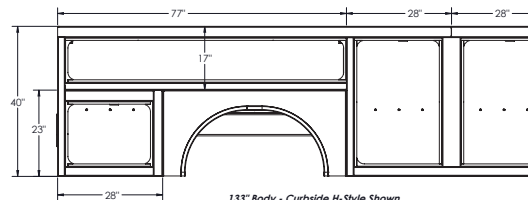
"V" Configuration (V132)

- 1st Vertical: Two adjustable shelves with two adjustable dividers per self
- 2nd Vertical: Two adjustable shelves with two adjustable dividers per self
- Horizontal: Open with "Pass-Through" to rear vertical
- Rear Vertical: One adjustable shelf with two adjustable dividers



"H" Configuration (H98 & H110)

- 1st Vertical: Two adjustable shelves with two adjustable dividers per self
- Horizontal: One removable shelf with four adjustable dividers
- Rear Vertical: Open



133" Body - Curbside H-Style Shown

"H" Configuration (H132)

- 1st Vertical: Two adjustable shelves with two adjustable dividers per self
- 2nd Vertical: Two adjustable shelves with two adjustable dividers per self
- Horizontal: One removable shelf with four adjustable dividers
- Rear Vertical: Open

PJ

TRUCK BEDS

1807 FM 2352 / Sumner, TX 75486
pjtruckbeds.com
903-669-0266

